

Tenor Sax II

Grata Nova

(HC - 018)

Arr. Leandro Vieira

Adapt. Sedivar

Andante ♩ = 66

Andante ♩ = 72

ff

f

mf

f **p** **f**

mp

mp

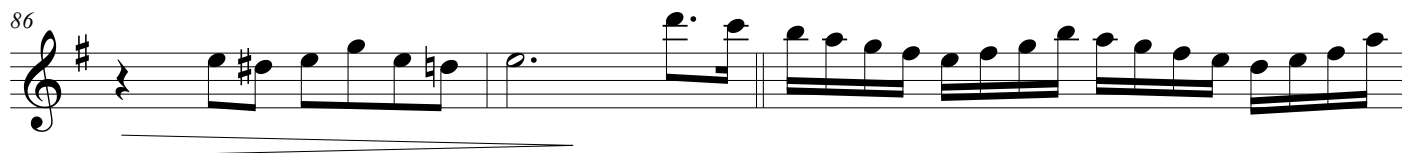
fp

Powerfull ♩ = 64

Mais Lento

4 7 9 3 6 7 2/4 4/4

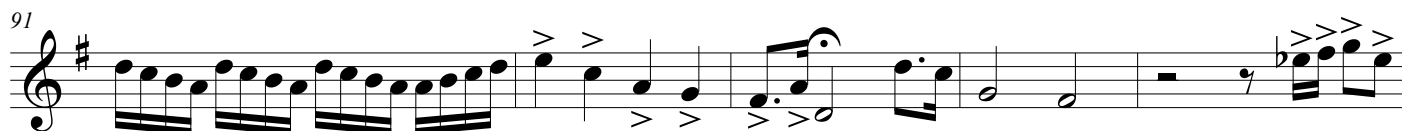
86



89



91



96

